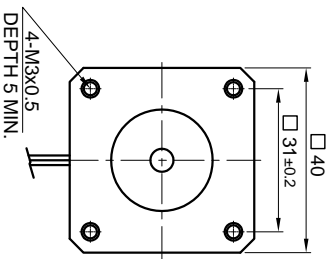
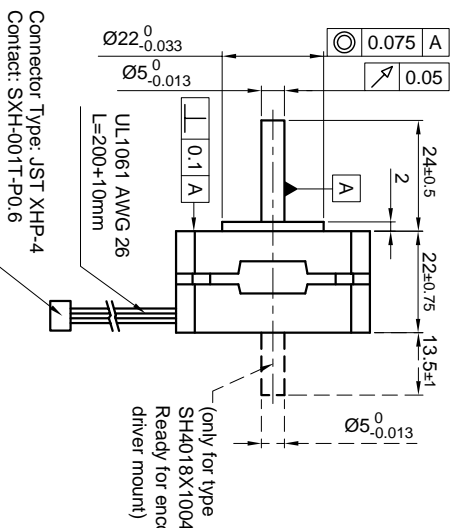


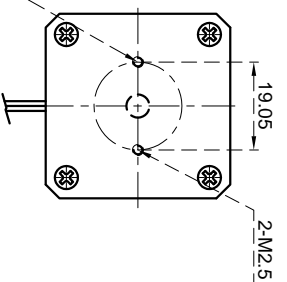
Front view and mounting



Side view

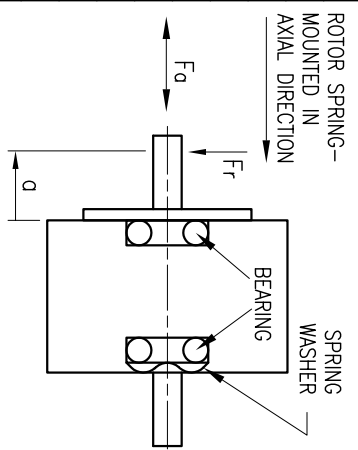


Rear view



SPECIFICATION	CONNECTION	BIPOLAR
VOLTAGE (VDC)		6.8
AMPS/PHASE		1.0
RESISTANCE/PHASE (Ohms)@25°C		6.8±15%
INDUCTANCE/PHASE (mH) @1KHz		6.0±20%
HOLDING TORQUE (Nm) [lb-in]		0.08 [0.708]
DETENT TORQUE (Nm) [lb-in]		2.4x10 ⁻³ [0.0212]
STEP ANGLE (°)		1.8
STEP ACCURACY (NON-ACCUM)		±5%
ROTOR INERTIA (Kg-m ²) [lb-in ²]		1.3x10 ⁻⁶ [4.4x10 ⁻³]
WEIGHT (Kg) [lb]		0.14 [0.309]
TEMPERATURE RISE: MAX.80°C (MOTOR STANDSTILL; FOR 2 PHASE ENERGIZED)		
AMBIENT TEMPERATURE -10°~ 50°C [14°F ~ 122°F]		
INSULATION RESISTANCE 100 Mohm (UNDER NORMAL TEMPERATURE AND HUMIDITY)		
INSULATION CLASS B 130° [266°F]		
DIELECTRIC STRENGTH 500VAC FOR 1 MIN. (BETWEEN THE MOTOR COILS AND THE MOTOR CASE)		
AMBIENT HUMIDITY MAX. 85% (NO CONDENSATION)		

PERMISSIBLE RADIAL+AXIAL FORCE

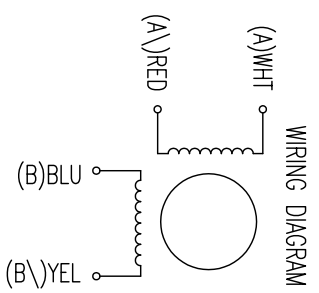


AXIAL-FORCE Fa (N)	Fr = 7	5	10	15	20
DISTANCE a (mm)		5	10	15	20
RADIAL-FORCE Fr (N)		58	36	26	20
AXIAL		0.075	0.075	0.025	
SHAFT PLAY (mm)					
AT LOAD MAX: (N)		10		5.0	

TYPE OF CONNECTION (EXTERN)	MOTOR	CONNECTOR PIN NO.	LEADS	WINDING
BIPOLAR	A ---	1	WHT	A
	A \ ---	3	RED	A \
	B ---	2	BLU	B
	B \ ---	4	YEL	B \

FULL STEP 2 PHASE-Ex., WHEN FACING MOUNTING END (X)

STEP	A	B	A \	B \	CCW	CW
1	+	+	-	-	←	→
2	-	+	+	-	→	←
3	-	-	+	+	←	→
4	+	-	-	+	→	←



REV	DESCRIPTION	DATE	APVD	NANOTEC:	SCALE FREE	APVD	CHKD	DRN	SIGNATURE	DATE	DWG:NO
				SH4018X1004	±0.5 ±0.2 ±0.1 ±30°	S.K.		J.W.			SH4018X1004

STEPPING MOTOR