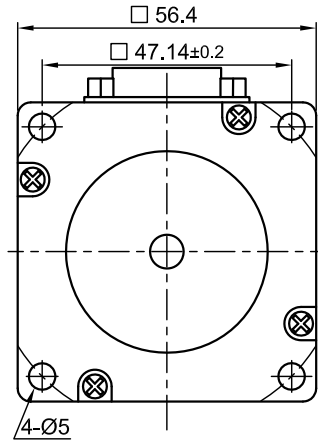
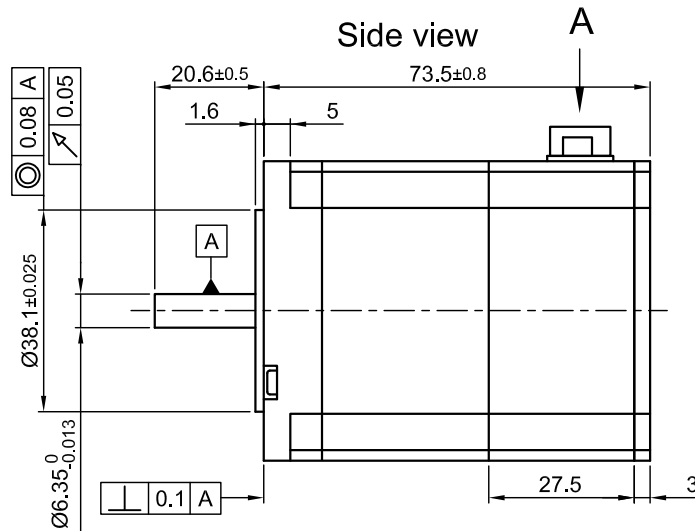


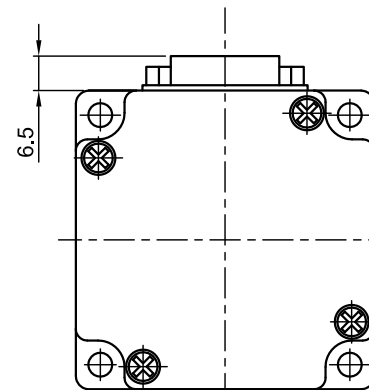
Front view and mounting



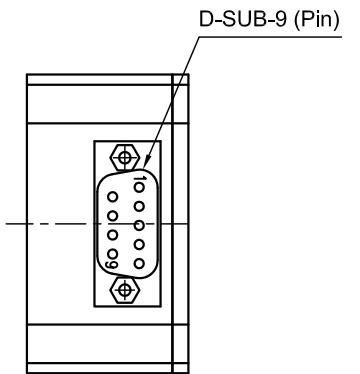
Side view



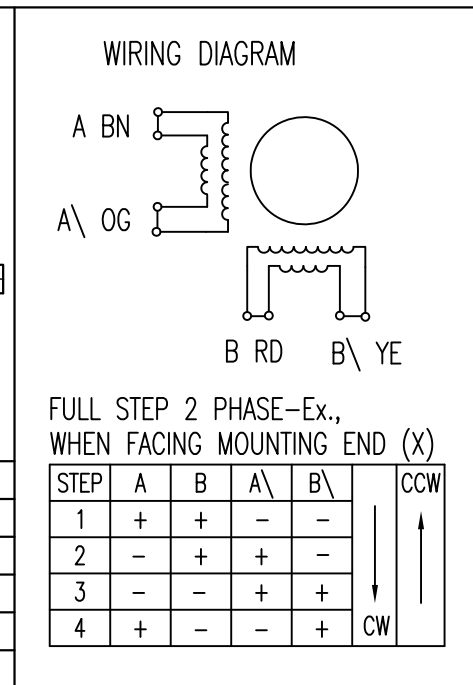
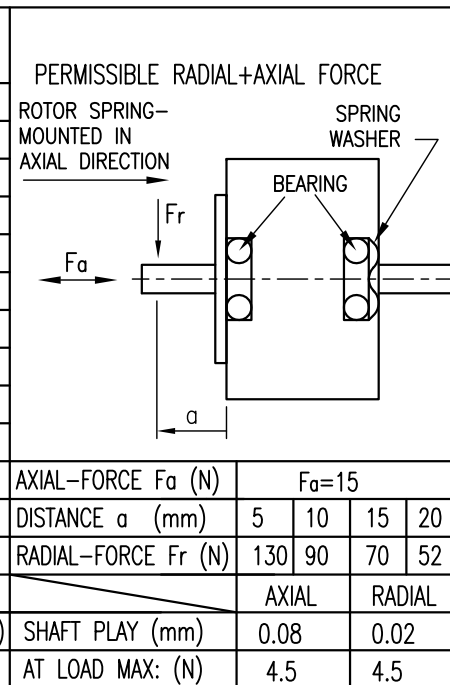
Rear view



Top view A



SPECIFICATION	CONNECTION	BIPOLAR PARALLEL
VOLTAGE (VDC)		2.4
AMPS/PHASE		2.82
RESISTANCE/PHASE (Ohms)@25°C		0.85±10%
INDUCTANCE/PHASE (mH) @1KHz		3.6±20%
HOLDING TORQUE (Nm) [lb-in]		1.05 [9.29]
DETENT TORQUE (Nm) [lb-in]		0.04 [0.354]
STEP ANGLE (°) ± ACCURACY		1.8±5% (NON-ACCUM)
BACK-EMF (V) (300 U/min)		17.49
ROTOR INERTIA (Kg-m ²) [lb-in ²]		2.9x10 ⁻⁵ [0.099]
WEIGHT (Kg) [lb]		0.87 [1.92]
TEMPERATURE RISE: MAX.80°C (MOTOR STANDSTILL; FOR 2 PHASE ENERGIZED)		
AMBIENT TEMPERATURE -10~ 50°C [14°F ~ 122°F]		
INSULATION RESISTANCE 100 MOhm (UNDER NORMAL TEMPERATURE AND HUMIDITY)		
INSULATION CLASS B 130° [266°F]		
DIELECTRIC STRENGTH 500VAC FOR 1 MIN. (BETWEEN THE MOTOR COILS AND THE MOTOR CASE)		
AMBIENT HUMIDITY MAX. 85% (NO CONDENSATION)		



MOTOR D-SUB-9	
PIN	ASSIGNMENT
1	A
2	A\
3	B
4	B\
5	NC
6	NC
7	NC
8	NC
9	NC
HOUSING	GND/SHIELDING

				<p>Nanotec PLUG & DRIVE</p>	SCALE FREE	APVD			<p>STEPPING MOTOR</p>
					X ±0.5	CHKD			
				1PL ±0.2	DRN	J.W.	29.01.07	DWG.NO	
REV	DESCRIPTION	DATE	APVD	AD5918M2804	2PL ±0.1	SIGNATURE	DATE	AD5918M2804	
				ANGLE ±30'					