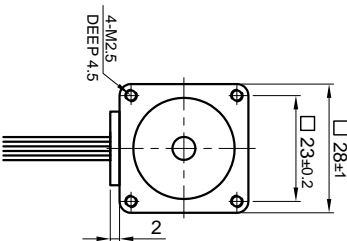
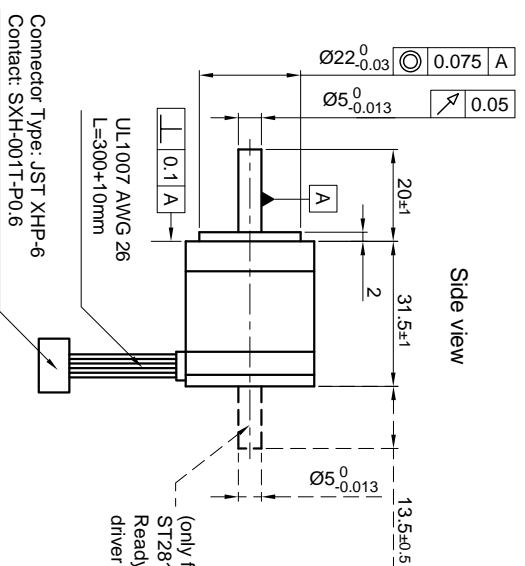


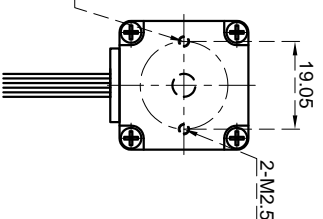
Front view and mounting



Side view



Rear view



CONNECTION	UNIPOLAR OR BIPOLAR-1 WINDING	BIPOLAR SERIAL
VOLTAGE (VDC)	2.66	3.75
AMPS/PHASE	0.95	0.67
RESISTANCE/PHASE (Ohms)@25°C	2.8±15%	5.6±15%
INDUCTANCE/PHASE (mH) @1KHz	1.0±20%	4.0±20%
HOLDING TORQUE (Nm) [lb-in]	0.05 [0.443]	0.071 [0.626]
DETTENT TORQUE (Nm) [lb-in]	2.5x10 <sup>-3</sup> [0.0222]	
STEP ANGLE (°)		1.8
STEP ACCURACY (NON-ACCUM)		±5%
ROTOR INERTIA (kg-m <sup>2</sup> ) [lb-in <sup>2</sup> ]	9x10 <sup>-7</sup> [3.074x10 <sup>-3</sup> ]	
WEIGHT (kg) [lb]		0.11 [0.242]
TEMPERATURE RISE: MAX.80°C (MOTOR STANDSTILL; FOR 2 PHASE ENERGIZED)		
AMBIENT TEMPERATURE -10°~ 50°C [14°F ~ 122°F]		
INSULATION RESISTANCE 100 MΩhm (UNDER NORMAL TEMPERATURE AND HUMIDITY)		
INSULATION CLASS B 130° [266°F]		
DIELECTRIC STRENGTH 500VAC FOR 1 MIN. (BETWEEN THE MOTOR COILS AND THE MOTOR CASE)		
AMBIENT HUMIDITY MAX. 85% (NO CONDENSATION)		

PERMISSIBLE RADIAL-AXIAL FORCE	ROTOR SPRING-- MOUNTED IN AXIAL DIRECTION	BEARING	SPRING WASHER
$F_d$	$F_r$		
$a$			

AXIAL-FORCE $F_d$ (N)	AXIAL-FORCE $F_r$ (N)	AXIAL	RADIAL
5	10	15	20
58	36	26	20
0.075	0.025		
10	5.0		

TYPE OF CONNECTION (EXTERN)	BIPOLAR WINDING	SERIAL WINDING	CONNECTOR PIN NO.	LEADS	WINDING
UNIPOLAR	A --- COM	A --- COM	1	BLK	A --- COM
	A \ COM	A \ COM	5	YEL	A \ COM
	B --- COM	B --- COM	3	GRN	A \ COM
	B \ COM	B \ COM	2	RED	B --- COM
			6	WHT	B \ COM
			4	BLU	B \ COM

for >speed →  
for <speed ←

FULL STEP 2 PHASE-Ex,  
WHEN FACING MOUNTING END (X)

STEP	A	B	A \	B \	CCW
1	+	+	-	-	↑
2	-	+	+	-	↓
3	-	-	+	+	↑
4	+	-	-	+	↓

WIRING DIAGRAM

**STEPPING MOTOR**

SCALE FREE: X ±0.5, 1PL ±0.2, 2PL ±0.1, ANGLE ±30°

APVD: S.K. 06.06.06

CHKD: J.W. 06.06.06

DRN: J.W. 06.06.06

SIGNATURE: J.W.

DATE: 06.06.06

DWG.NO: DWG.NO

ST2818S1006